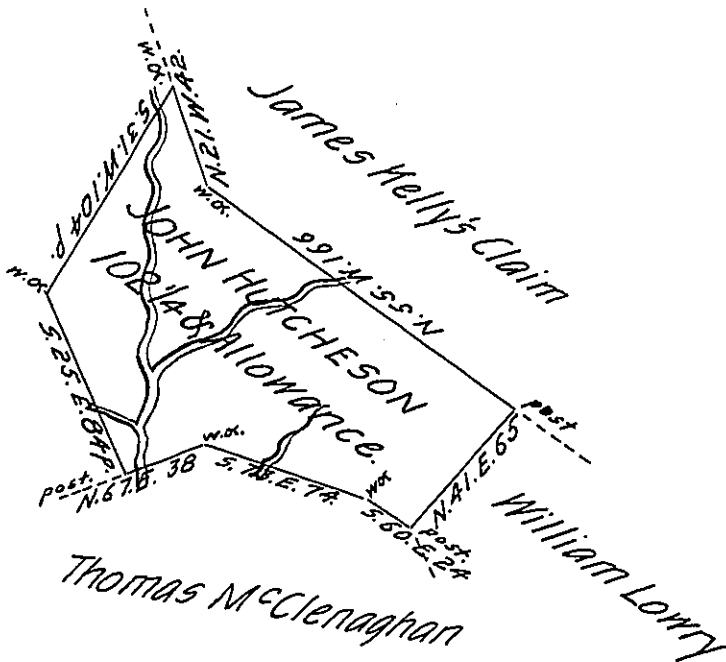


Warranted  
Land



Survey'd to John Hutcheson on the 25<sup>th</sup> day of November 1786 the above described Tract of One hundred and two acres, and one Quarter of an acre, and Allowance of six per Cent. Situate on the North side of Black Lick- and Cherry Run adjoining land of Thomas M<sup>c</sup>Clenaghan on the south, William Lowry on the East, James Kelly on the North, and William Stewart on the West, in Armstrong Township, Westmoreland Courty, by warrant of the 25<sup>th</sup> day of August 1786

Joshua Elder, D.S.

John Lukens, Esq. S. Gen!

IN TESTIMONY that the above is a copy of the original remaining on file in the Department of Internal Affairs of Pennsylvania, made conformably to an Act of Assembly approved the 16th day of February, 1833, I have hereunto set my Hand and caused the Seal of said Department to be affixed at Harrisburg, this twenty-third day of March 1905.

*George B. Brown*  
Secretary of Internal Affairs.